

DIW Berlin

Deutsches Institut
für Wirtschaftsforschung



Innovation Indicator Germany How does India fit in?



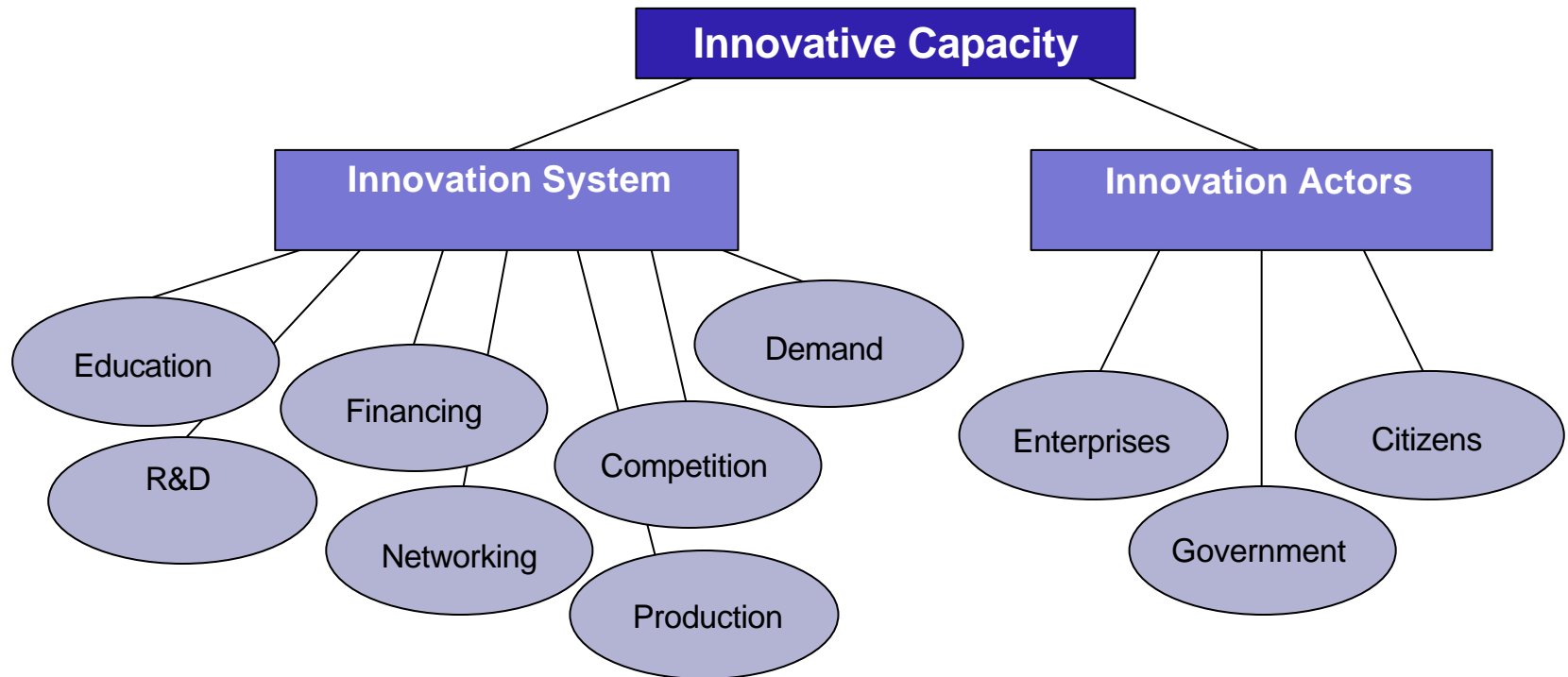
Axel Werwatz

Colloquium in honour of Dr. Desai's visit to Berlin

Aim

- ⇒ **Composite Indicator of Germany's
National Innovative Capacity**
in an **international** Perspective
- **Comprehensible, interesting,
yet sophisticated enough**
 - **Focus and debate**

The Concept



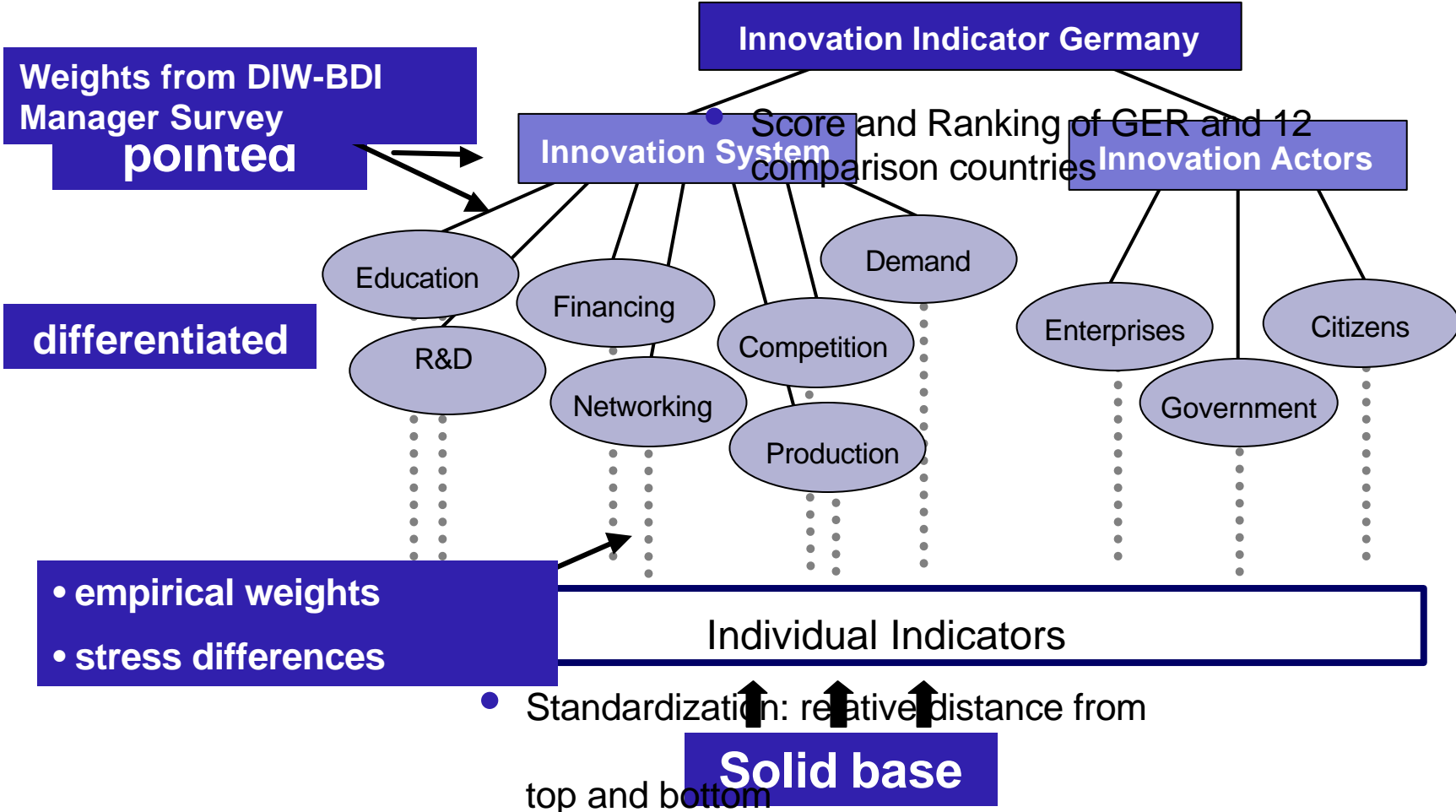
→ System **and** Actors

→ Innovation is a technical **and** socio- economic
Phenomenon

Data Basis

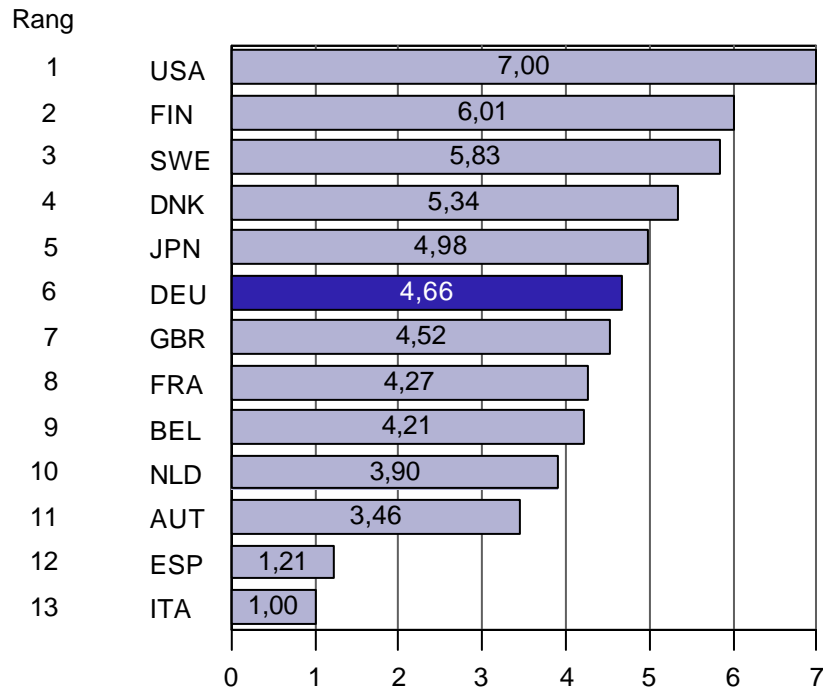
- **Innovation (System) is complex**
- **Comparison countries are highly developed**
 - **broad data basis**
 - **150 individual indicators from multiple sources**
 - **„hard“-OECD-Indicators**
 - **Managerial Assessments (WEF)**
 - **Attitudes of Citizens
(World Values Study, Eurobarometer)**
 - **“Specialized Indicators” (Entrepreneurship,
Regulation)**

Method

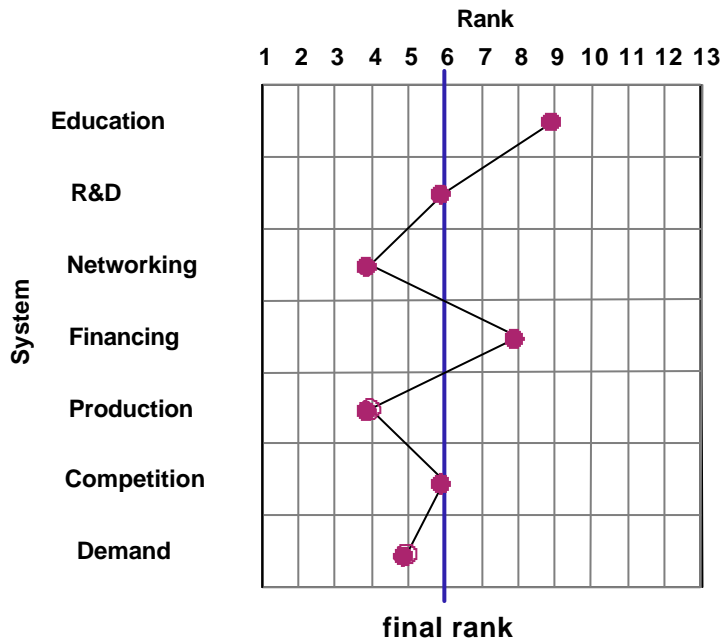


Result for composite indicator

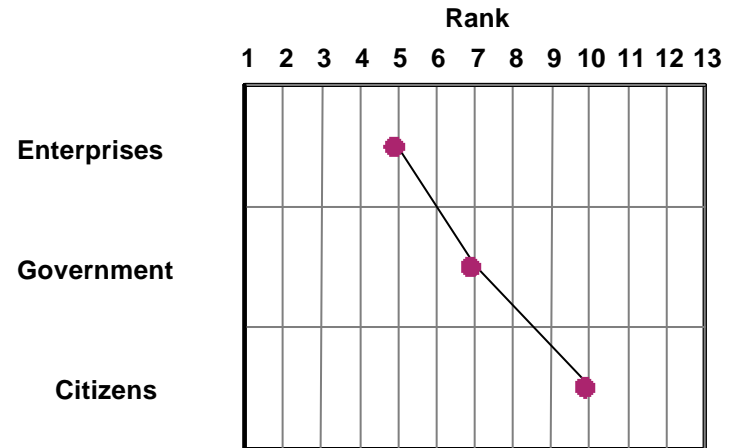
Germany is average



Innovation System



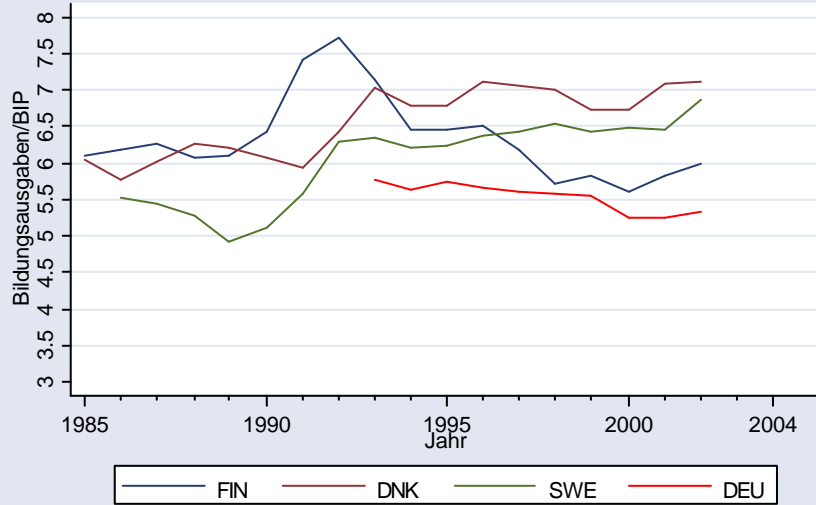
Innovation Actors



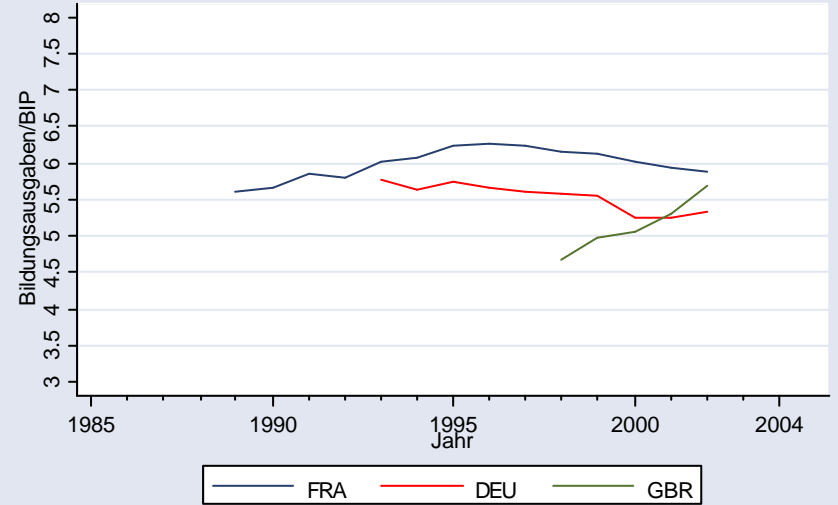
China and Indien

- Huge Population:
giant labour- and product market
- Still low per-capita income
- but impressive **growths**
- impressive **dynamics of innovation?**

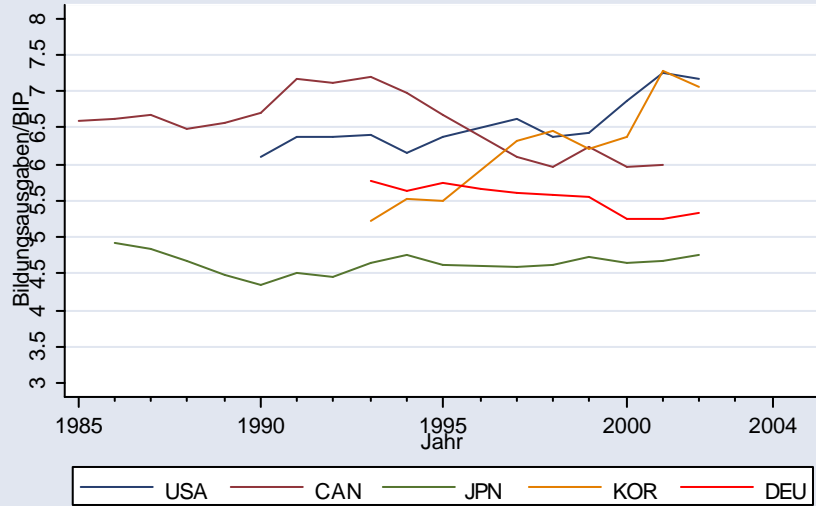
Anteil Bildungsausgaben am BIP
Nordische Länder



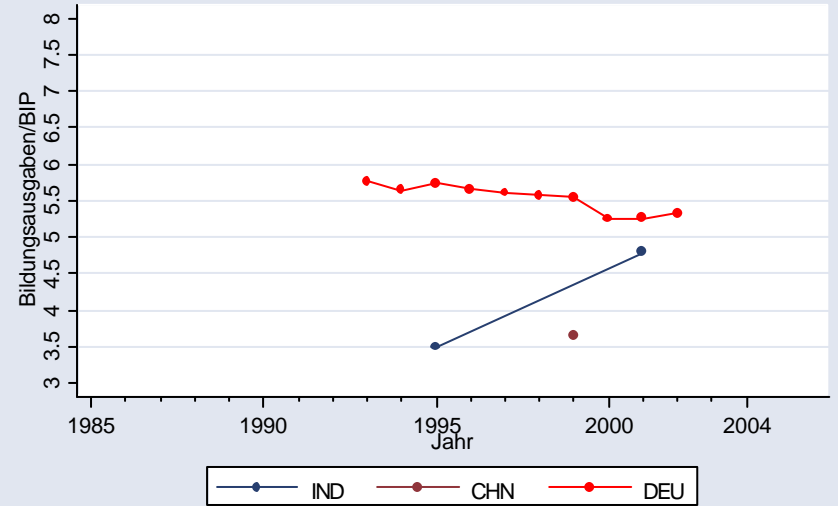
Anteil Bildungsausgaben am BIP
Große westeuropäische Länder



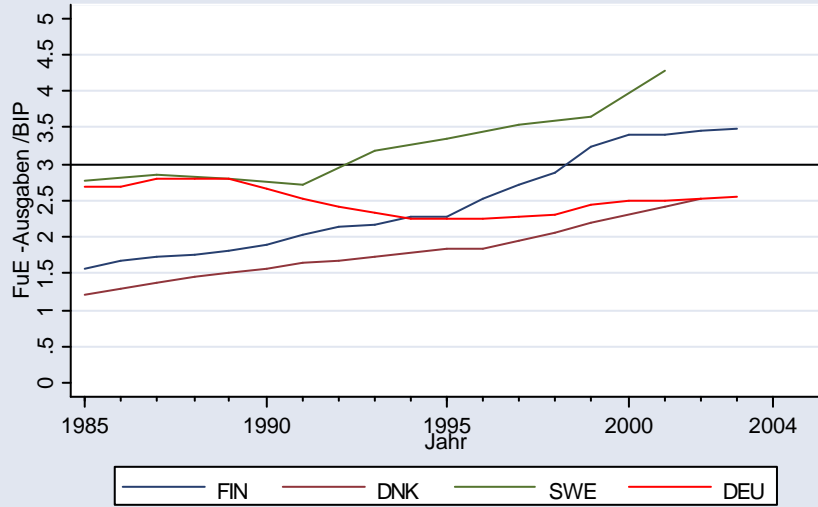
Anteil Bildungsausgaben am BIP
amerikanische und asiatische Länder



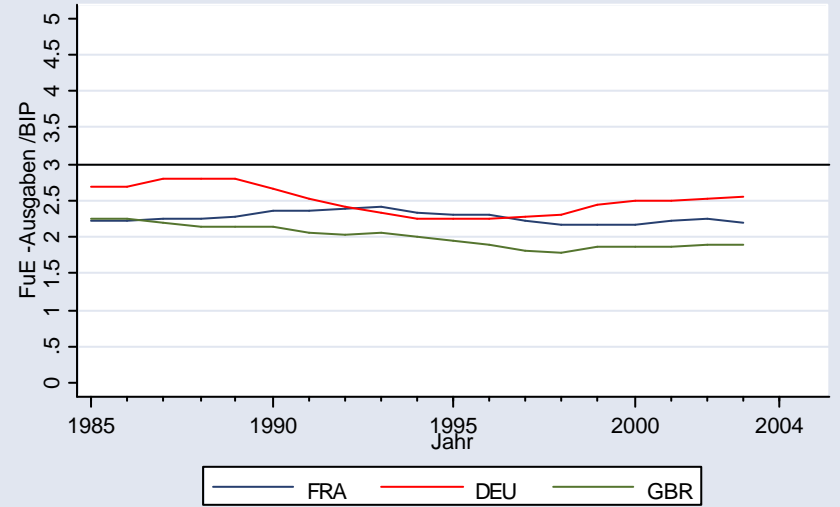
Anteil Bildungsausgaben am BIP
Aufholerländer



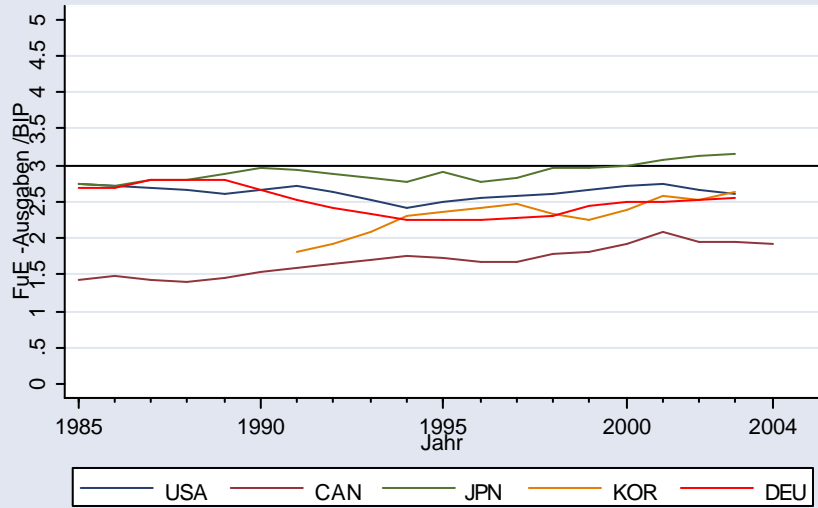
Anteil FuE-Ausgaben am BIP
Nordische Länder



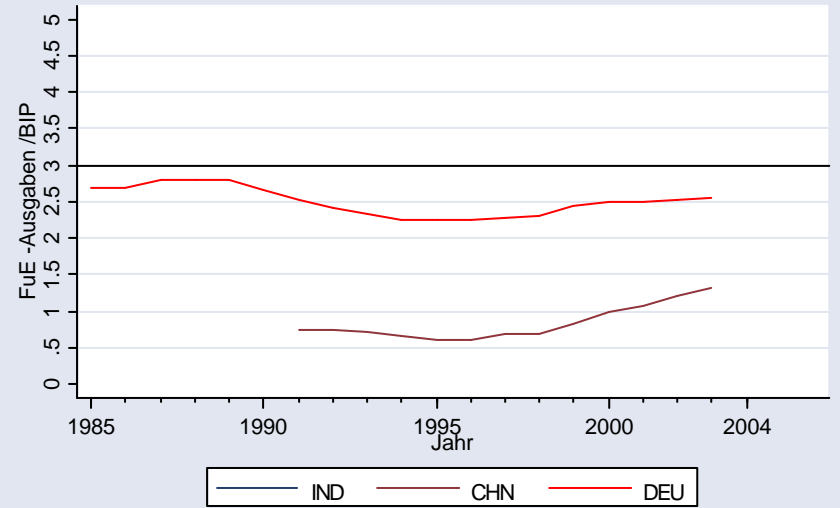
Anteil FuE-Ausgaben am BIP
Große westeuropäische Länder



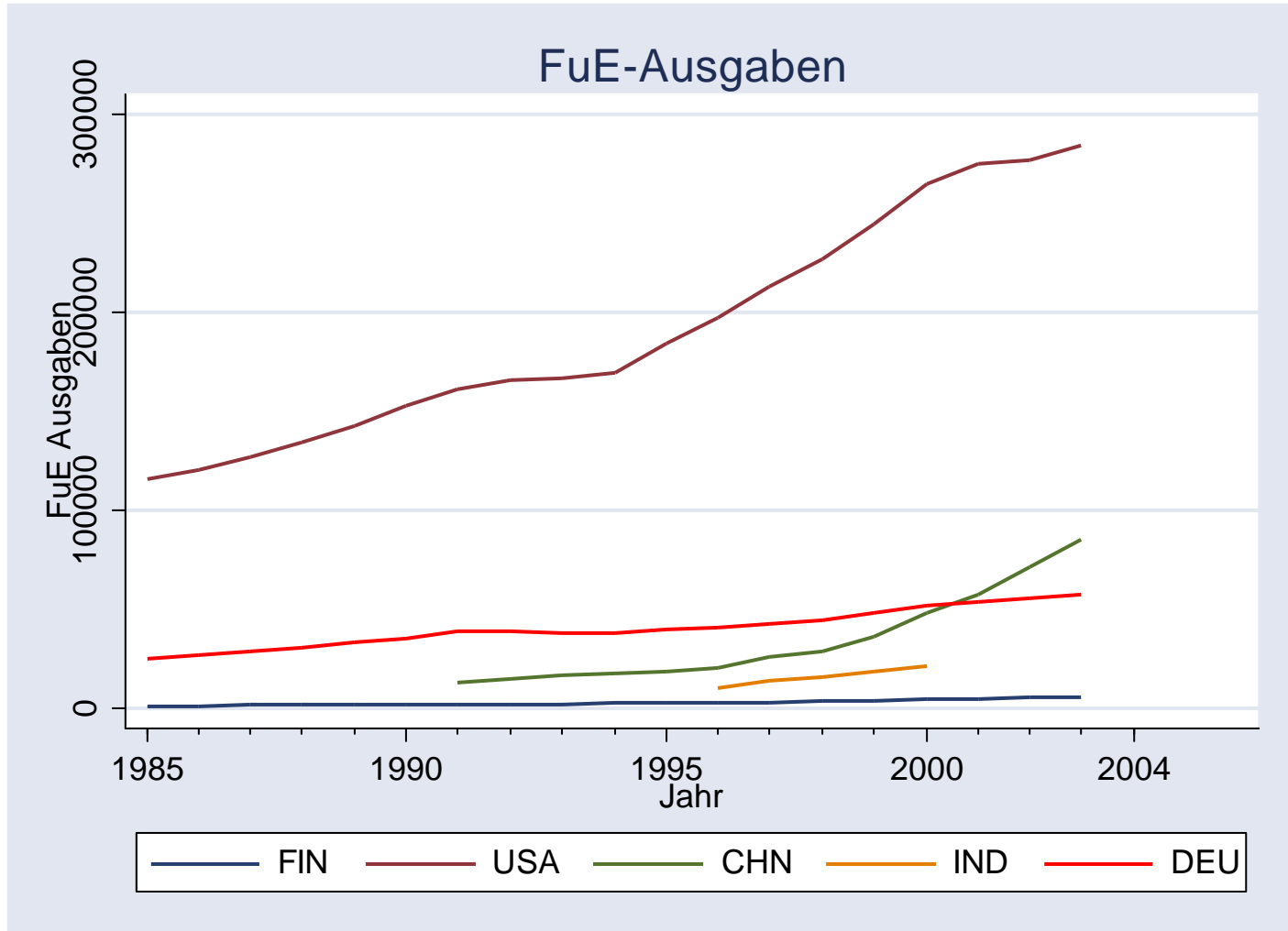
Anteil FuE-Ausgaben am BIP
amerikanische und asiatische Länder



Anteil FuE-Ausgaben am BIP
Aufholländer

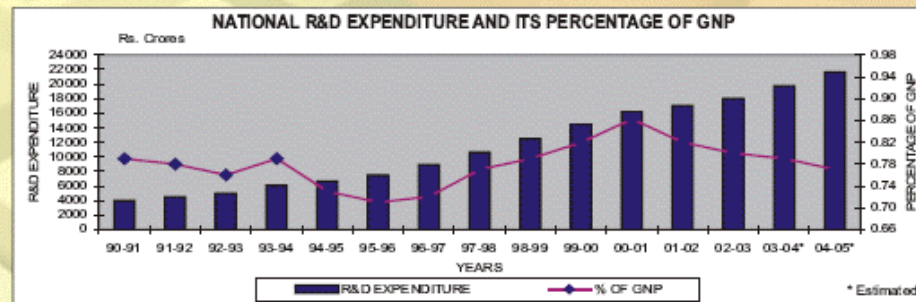


R&D expenditure (absolute figures)

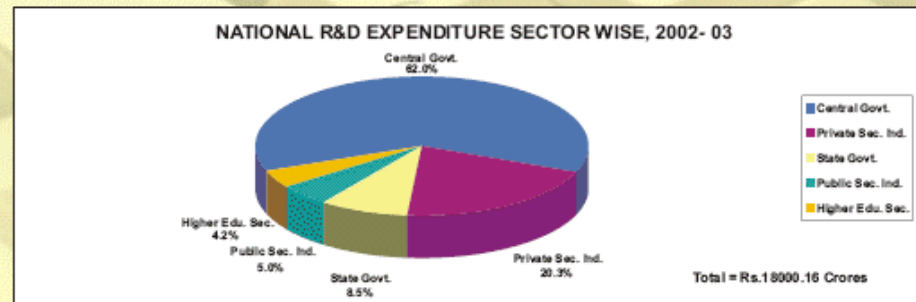


MAJOR HIGHLIGHTS

- ❖ The national investment on R&D activities attained a level of Rs.18000.16 crores in 2002-03. The same is estimated to be Rs.19726.99 crores in 2003-04 and Rs.21639.58 crores in 2004-05.
- ❖ 0.80% of Gross National Product (GNP) was devoted to R&D during the year 2002-03.

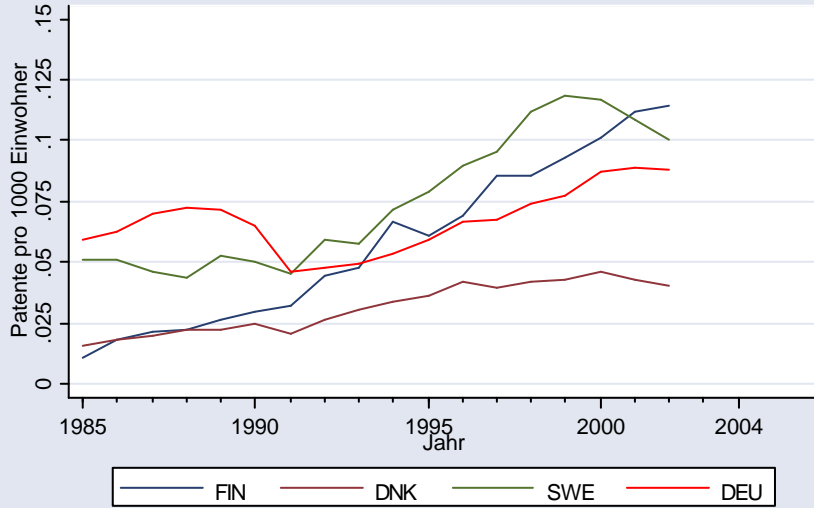


- ❖ Sector-wise percentage share of national R&D expenditure during 2002-03 was from Central Government 62.0%, State Governments 8.5%, Higher Education 4.2%, Public Sector Industries 5.0% and Private Sector Industries 20.3%.

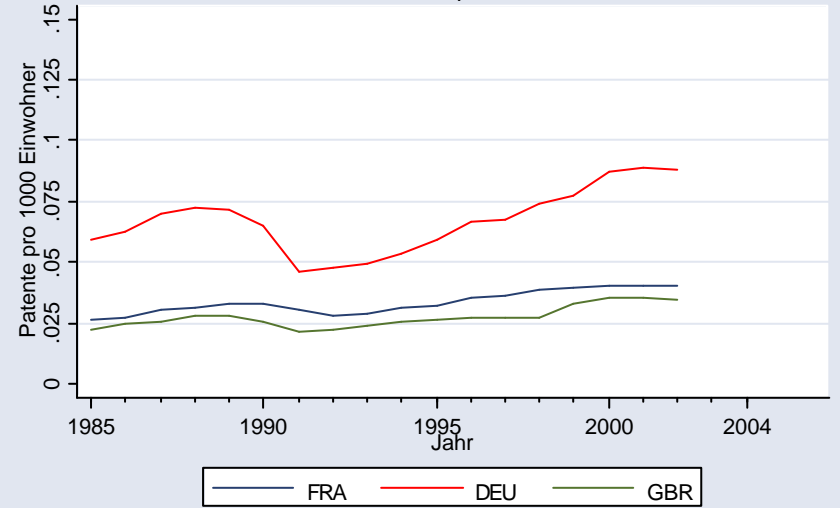


- ❖ As on 1st April, 2001, nearly 2.96 lakhs personnel were employed in the R&D establishments in the country including in-house R&D units of public and private sector industries. 31.7% were performing R&D activities, 30.4% were performing auxiliary activities and rest 37.9% were providing administrative and non-technical support.

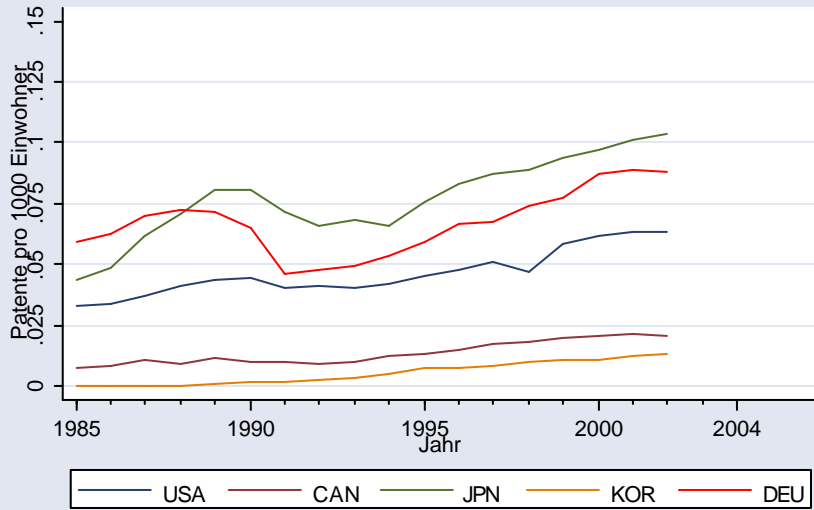
Zahl der Triade Patente pro 1000 Einwohner
Nordische Länder



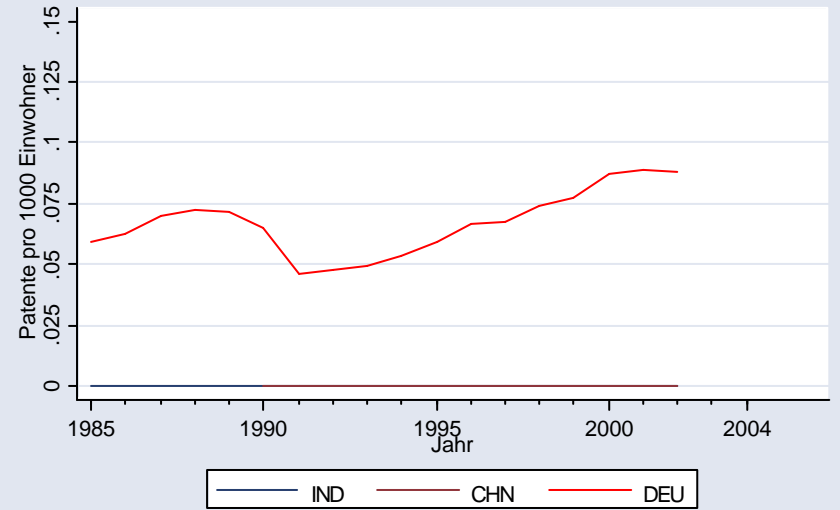
Zahl der Triade Patente pro 1000 Einwohner
Große westeuropäische Länder



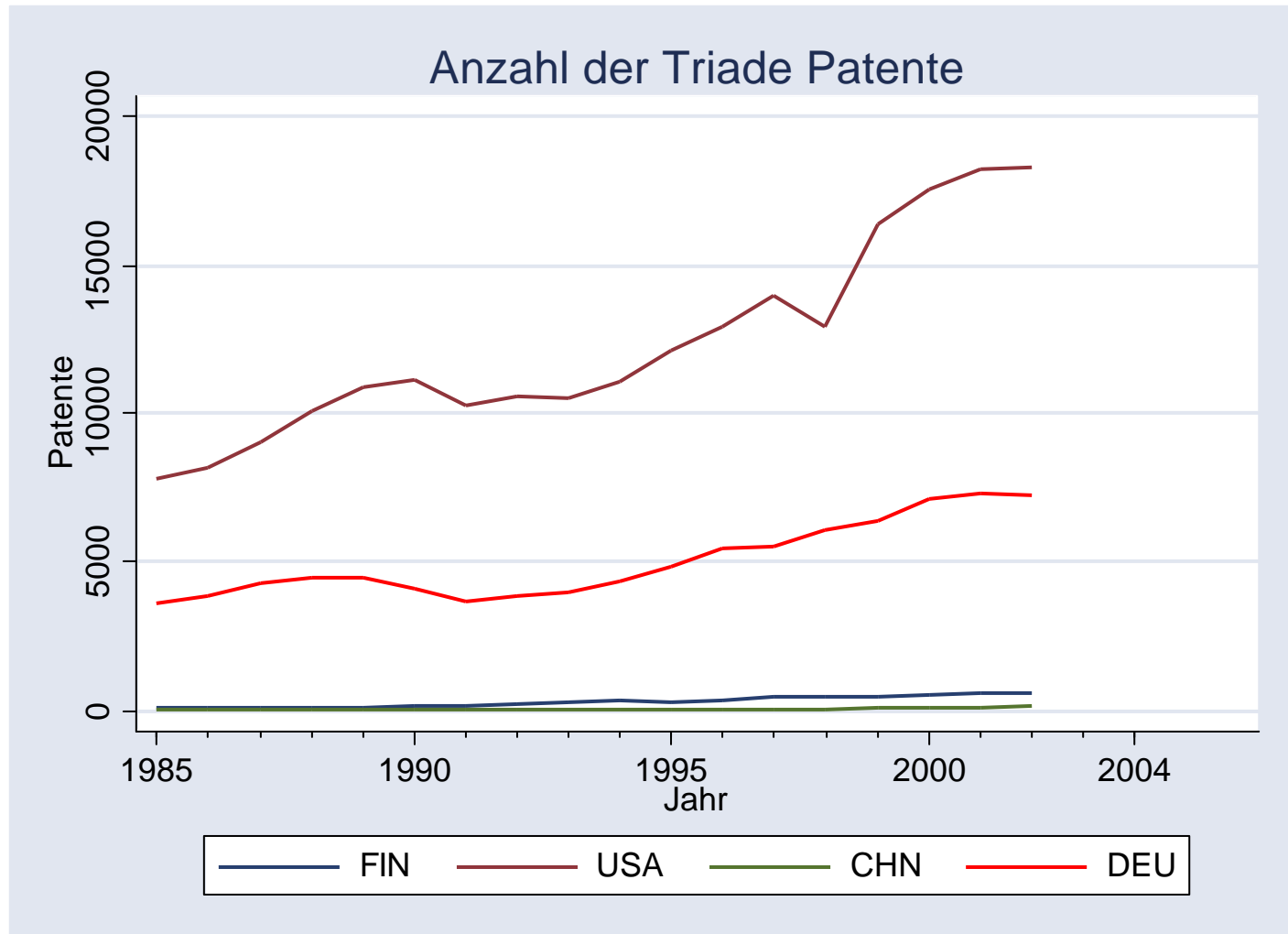
Zahl der Triade Patente pro 1000 Einwohner
amerikanische und asiatische Länder



Zahl der Triade Patente pro 1000 Einwohner
Aufholländer



Triadic Patents (absolute figures)



DIW Berlin

Deutsches Institut
für Wirtschaftsforschung



Innovation Indicator Germany How does India fit in?



Axel Werwatz

Colloquium in honour of Dr. Desai's visit to Berlin